

FrameWright Pro

Installation Guide

Contents

1.1	Downloading FrameWright Pro.....	3
1.2	Installing FrameWright Pro on MacOS X.....	3
1.3	Installing FrameWright Pro on Windows.....	5
1.4	Registering FrameWright Pro.....	6

Encina Ltd

7 The Russets,
Portishead,
North Somerset
BS20 7LP
Tel. +44 (0) 1275 840 103
E-mail: contact@encina.co.uk
Website: www.encina.co.uk

FrameWright Pro Installation Guide

Copyright © 2005 by Encina, all rights reserved. Reproduction, paraphrasing or translation without express prior written permission is strictly prohibited.

1.1 Downloading FrameWright Pro

The latest version of FrameWright Pro can be found at <http://encina.co.uk/sw-download.html>. Select the download which suits your computer platform (Mac or Windows) and ArchiCAD version (Fig. 1.11).

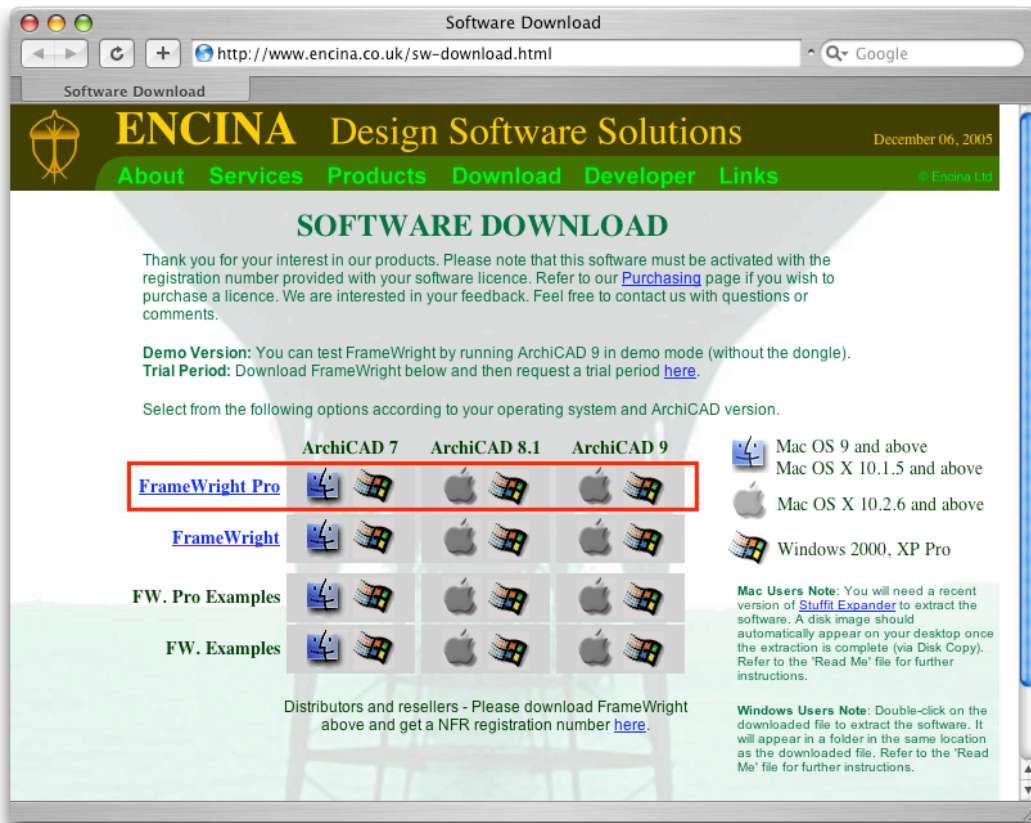


Figure 1.11

Platform-specific installation instructions follow below.

1.2 Installing FrameWright Pro on Mac OS X

Your browser should automatically open the selected file when the download is complete. If not, you should locate the downloaded file and open it by double-clicking on the icon (Fig. 1.21). The Mac OS will automatically mount a new volume on your computer which contains the necessary installation files (Fig. 1.22).



Figure 1.21

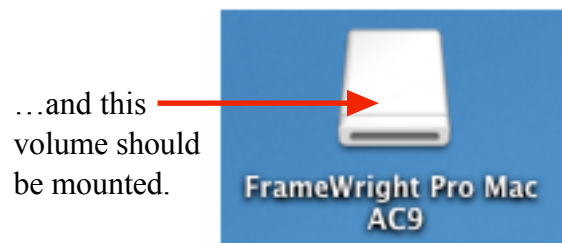


Figure 1.22

Make sure you have Quit from ArchiCAD before continuing with the installation.

Double-click on the FrameWright Pro installation volume (Fig. 1.22) to view the contents. It should contain the files shown in Figure 1.23.

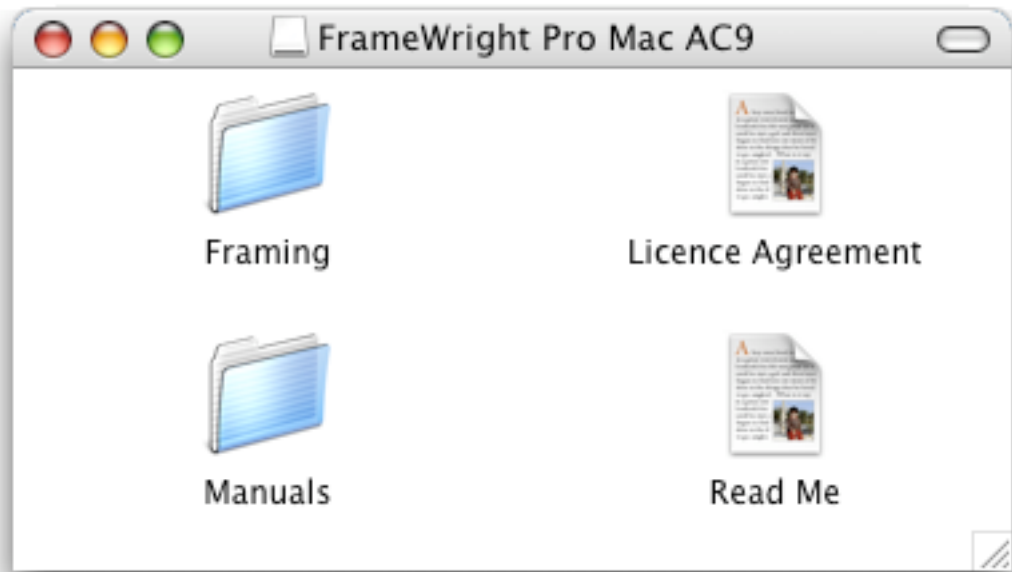


Figure 1.23

Read the included License Agreement before installing the software, and refer to the 'Read Me' file for late-breaking additions. To install FrameWright Pro:

1. Make sure ArchiCAD is not running (quit first if it is).
2. Drag the folder called "Framing" into the "Add-Ons" folder in the ArchiCAD application folder (Fig. 1.24). Copy the entire folder as shown because it contains more files than the add-on alone.
3. Launch ArchiCAD again.
4. Refer to section 1.4 for registration instructions.

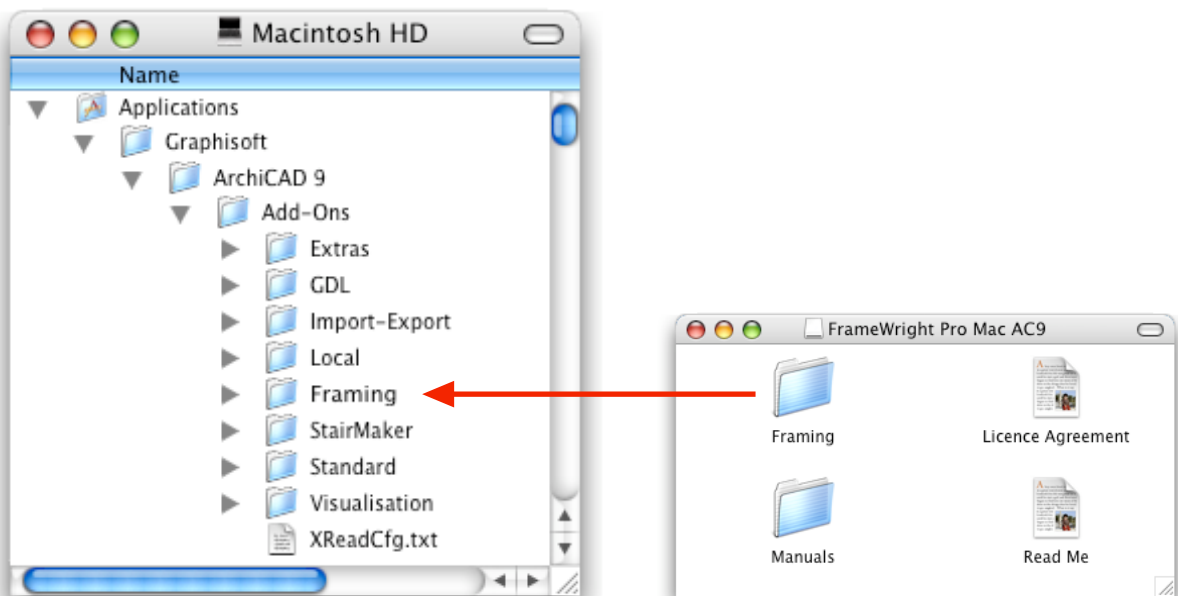


Figure 1.24

1.3 Installing FrameWright Pro on Windows

Your browser may automatically open the selected file when the download is complete. If not, you should locate the downloaded file and open it by double-clicking on the icon (Fig. 1.32). You will first be prompted for the location of the installation folder - the desktop is an easy option (Fig. 1.31).

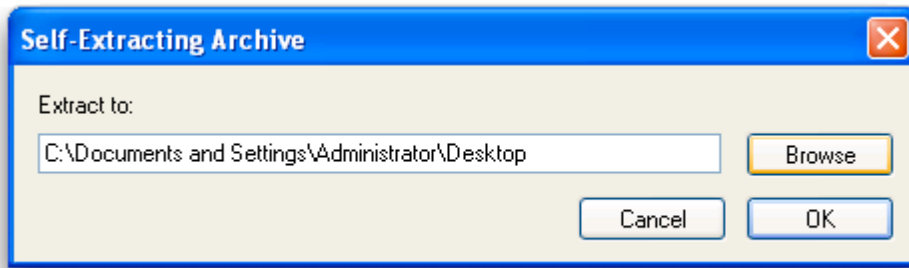


Figure 1.31

You should see a new folder appear once the extraction process is complete (Fig. 1.33).



Figure 1.32

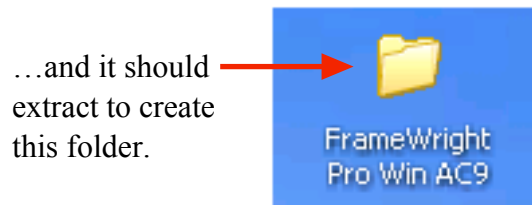


Figure 1.33

Make sure you have Quit from ArchiCAD before continuing with the installation. Open the FrameWright Pro installation folder (Fig. 1.33) to view the contents. It should contain the files shown in Figure 1.34.



Figure 1.34

Read the included License Agreement before installing the software, and refer to the 'Read Me' file for late-breaking additions. To install FrameWright Pro:

1. Make sure ArchiCAD is not running (quit first if it is).
2. Drag the folder called "Framing" into the "Add-Ons" folder in the ArchiCAD application folder (Fig. 1.35). Copy the entire folder as shown because it contains more files than the add-on alone.
3. Launch ArchiCAD again.
4. Refer to section 1.4 for registration instructions.

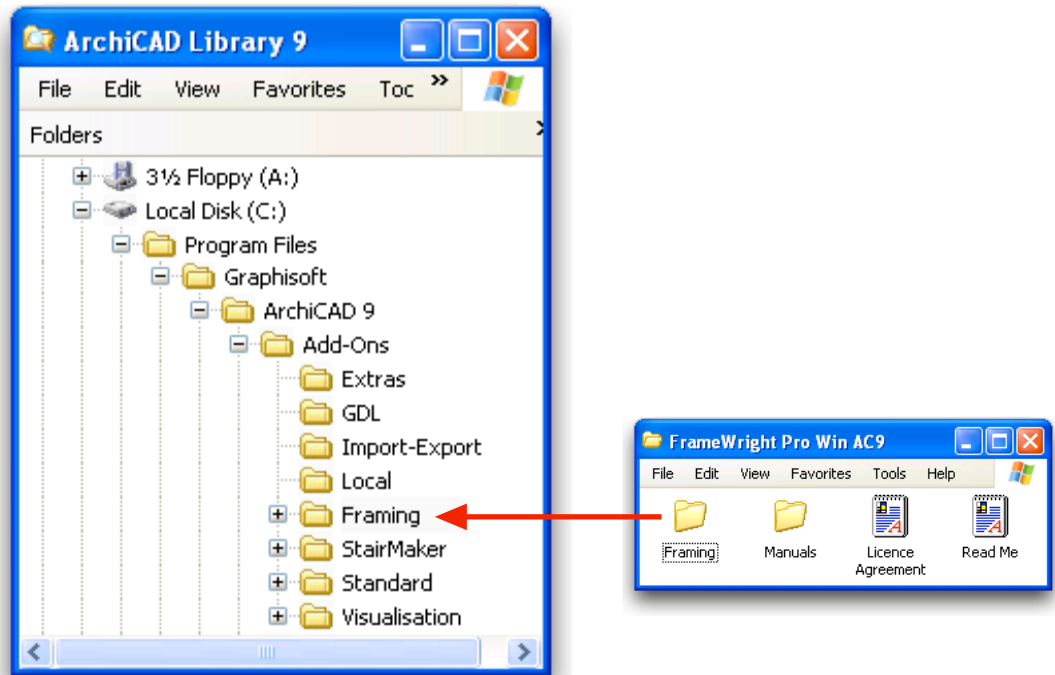


Figure 1.35

1.4 Registering FrameWright Pro

When ArchiCAD has restarted you should see a new menu named 'Framing' (see section 3.2) and a new icon in the tool bar (see section 3.1). Refer to the 'Troubleshooting' section if these items do not appear.

Timber and steel libraries are bundled with FrameWright Pro, and both are loaded by default provided they remain in the 'FrameWright Pro' folder (in the 'Add-Ons' folder). The add-on won't ask for a registration code until you try to use one of its tools (a menu item from the 'Framing menu for example). A dialog box will appear with a prompt for your registered name and code (Fig. 1.41).

Enter your registration code if you have purchased a license for FrameWright Pro.

Alternatively, there are buttons to:

- Take you to an online store to purchase a license
- Request a free 1 month trial
- Request a NFR license

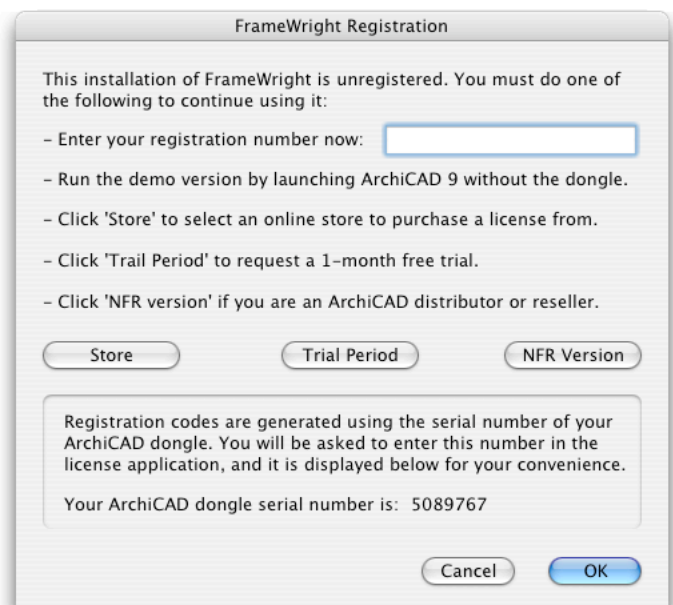


Figure 1.41